

ᑕᑭᑭᑦᑎᑦᑎᑦᑎᑦ ᑎᑦᑎᑦᑎᑦᑎᑦ ᑎᑦᑎᑦᑎᑦᑎᑦ ᑎᑦᑎᑦᑎᑦᑎᑦ
ᑎᑦᑎᑦᑎᑦᑎᑦᑎᑦ ᑎᑦᑎᑦᑎᑦᑎᑦᑎᑦ ᑎᑦᑎᑦᑎᑦᑎᑦᑎᑦ

CHAIRE DE RECHERCHE SUR LE
DÉVELOPPEMENT DURABLE DU NORD

NORTHERN SUSTAINABLE
DEVELOPMENT RESEARCH CHAIR



Knowledge Network on Mining Encounters
and Indigenous Sustainable Livelihoods



Knowledge Network on Mining Encounters and
Indigenous Sustainable Livelihoods: Cross-
Perspectives from the Circumpolar North and
Melanesia/Australia

SSHRC – Partnership Grant (2016-2022)



Knowledge Network on Mining Encounters
and Indigenous Sustainable Livelihoods

OBJECTIVES

- Create a knowledge network on **the impact of mineral exploration and extraction on Indigenous sustainable livelihoods;**
- Develop comparative analysis on the impacts of mining activities on **the recognition of Indigenous rights and indigenous self-government;**
- Training (indigenous) students and postdocs

But also

- Sharing knowledge and experiences amongst Indigenous People and other partners



Knowledge Network on Mining Encounters
and Indigenous Sustainable Livelihoods

WP1. GAP ANALYSIS AND COMPARISON

In this work package, the Network will **identify gaps in knowledge**

The team will also **compare the different legal and political environments of mining.**



Dean Carson and Elena Nuikina examining mining heritage in Burra, South Australia on the country of the Ngadjuri people.

WP2. THE INTERRELATIONS OF SOCIAL, CULTURAL, WELL-BEING AND NATURAL IMPACTS



This package's focus is on the **social, cultural, well-being and environmental impacts** of extractive industries, the ways they are **interrelated**, how they affect community well-being and influence Indigenous sustainable livelihoods.

Inukjuak, Nunavik, Québec
Photo: Thierry Rodon

WP3. WORK REGIMES AND INDIGENOUS EMPLOYMENT

In this package, the Network will **map the challenges and successes of Indigenous employment** in the mining sector and document the ways to develop **best practices**.



Nickel Mine, New Caledonia.
Photo: Christine Demmer

WP4. MINING REGIME AND INDIGENOUS LEGAL AND POLITICAL RIGHTS



The Network will look at the **different legal and political environments** in the circumpolar regions as well as in Oceania and how they **impact and are being impacted by resource developments.**

WP5. SUSTAINABLE REGIONAL AND LOCAL DEVELOPMENT

This work package will **address the “resource curse”** and the **key factors to maximise positive and lessen negative impacts** of resource development for Indigenous communities.



Iqaluit beach at -35, Nunavut, Canada

WP6. GLOCAL ENCOUNTERS



The Network will study the **challenges encountered** by communities when **negotiating IBAs with transnational mining organizations**. It also studies the **role of transnational Indigenous organizations** in mediating these 'glocal' encounters and their ability to mitigate power imbalances.

Ship being loaded at Rio Tinto Weipa operations with bauxite stockpiles

Photo: Rio Tinto

KNOWLEDGE MOBILIZATION: GUIDES

- 1) The different legal and political environments for mining and for recognition of Indigenous rights
- 2) The impacts of resource development on the social environment, health and well-being
- 3) The different types of extractive and refining mining processes and their impacts on natural capital
- 4) The best practices in indigenous training, employment and retention
- 5) Best practice on FPIC and social acceptability
- 6) The impact of resource revenue systems on community development
- 7) How to cope with fly-in fly-Out



IN THIS ISSUE

- What is MinErAL? p. 2
- Knowledge mobilization p. 2
- Network governance p. 3
- New partners p. 3
- Meet the coordination team p. 4
- Coming soon p. 4

WELCOME!
Tunngasugisi – Watchya- Kwei – Buoris- Bienvenue

Dear MinErAL members,
Welcome to the very first issue of the network's Newsletter! A lot has happened since we were awarded the funding from the Social Sciences and Humanities Research Council of Canada last September. Regional teams met and discussed their research objectives, new partners got involved, steering committees were established and collaborative work is now underway! MinErAL director, Thierry Rodon, kept busy while attending several national and international events and meetings with network members at the Inuit Studies Conference at Memorial University, at the UArctic Congress in St-Petersburg and at the ReSDA workshop in Ottawa, to name a few. We are now preparing for our common session and panel at ICASS IX, where the first international meeting of the network will also happen.

We hope that you'll enjoy this first issue and look forward to work together!

Photo: Thierry Rodon

WORD FROM THE DIRECTOR

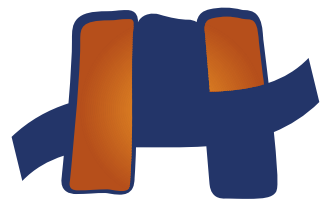
Dear MinErAL Researchers, Partners and Students
As you will see in this newsletter, these have been a busy few months to get MinErAL off the ground. This is not surprising with such an ambitious project that strives to establish a comparative and multidisciplinary research agenda. We will, however, be able to start some subprojects soon, first the gap analysis but also some international projects. We have also been busy preparing the Umeå meeting where many of you will be present. I'm also very glad that we have been able to develop a partnership agreement with REXSAC and I have to thank Peter Sköld for contacting the REXSAC researchers and preparing this partnership. Finally, as some of you know, I will be in sabbatical in 2017-18. It will give me chance to travel to

CONNECT WITH US

- 🐦 Follow us on Twitter @minesindigenous
- 📘 Like us on Facebook @chairedveloppementnord
- 🌐 Visit us online www.mineral.ulaval.ca

most of the research sites and hopefully strengthen the links between the MinErAL teams. I'm looking forward to working with you in the next 6 years!

Thierry Rodon
MinErAL Director



MinErAL

Knowledge Network on Mining Encounters
and Indigenous Sustainable Livelihoods

Some examples of Research Projects



2017 to 2019

FLY-IN FLY-OUT: IMPACTS ON WOMEN AND NORTHERN COMMUNITIES

The work shift system called "fly-in, fly-out" (FIFO) brings important impacts on women and Indigenous employment, work-family balance and indigenous and non-indigenous communities' vitality. In...

[READ MORE +](#)

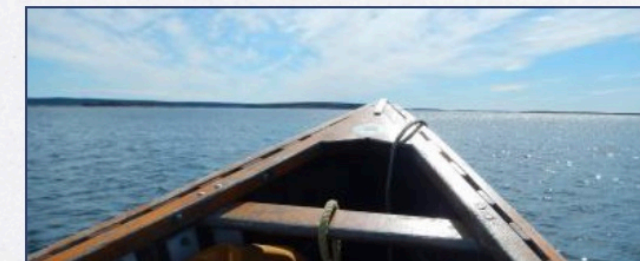


2017 to 2019

NORTHERN COMMUNITIES, PROVINCIAL GOVERNMENTS, AND NEGOTIATING THE MINING LIFE CYCLE – CASES FROM AUSTRALIA, CANADA AND SWEDEN

In the sparsely populated northern areas of Australia, Sweden, and Canada, the physical distance between Indigenous communities, governments and companies makes it difficult to adapt mining...

[READ MORE +](#)



2017 to 2019

COMPARING CONSULTATION, CONSENT AND NEGOTIATED AGREEMENTS IN ARCTIC EXTRACTIVE INDUSTRIES

This project aims to carry out a comparative baseline analysis of the theory and practice of consultation, negotiation of consent (or the absence thereof) and agreements between local/indigenous...

[READ MORE +](#)



2017 to 2019

NORTHERN VOICES IN ENVIRONMENTAL IMPACT ASSESSMENT DATABASE

Created by Christopher Fletcher, professor at Université Laval, this database identifies the different concerns voiced by citizens during the public hearings of about 15 development projects...

[READ MORE +](#)



2017 to 2019

SHATTERING THE MYTH OF THE GOOD MINING JOB: JOB DESIRABILITY FOR INUIT WORKERS

Proponents of resource development often cite wage employment as a key benefit that Indigenous communities will receive from participating in resource development based on the assumption that...

[READ MORE +](#)

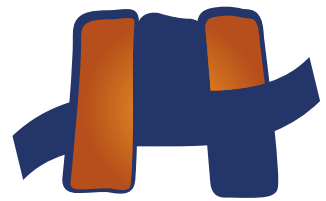


2017 to 2019

AT THE HEART OF NICKEL MINING CORPORATIONS IN NEW CALEDONIA: THE LABOR QUESTION

Studies on nickel mining in New Caledonia have mostly focused on how mining activities have been translated into a political issue, Kanak mobilizations to regain control over mining sites and...

[READ MORE +](#)



MinErAL

Knowledge Network on Mining Encounters
and Indigenous Sustainable Livelihoods

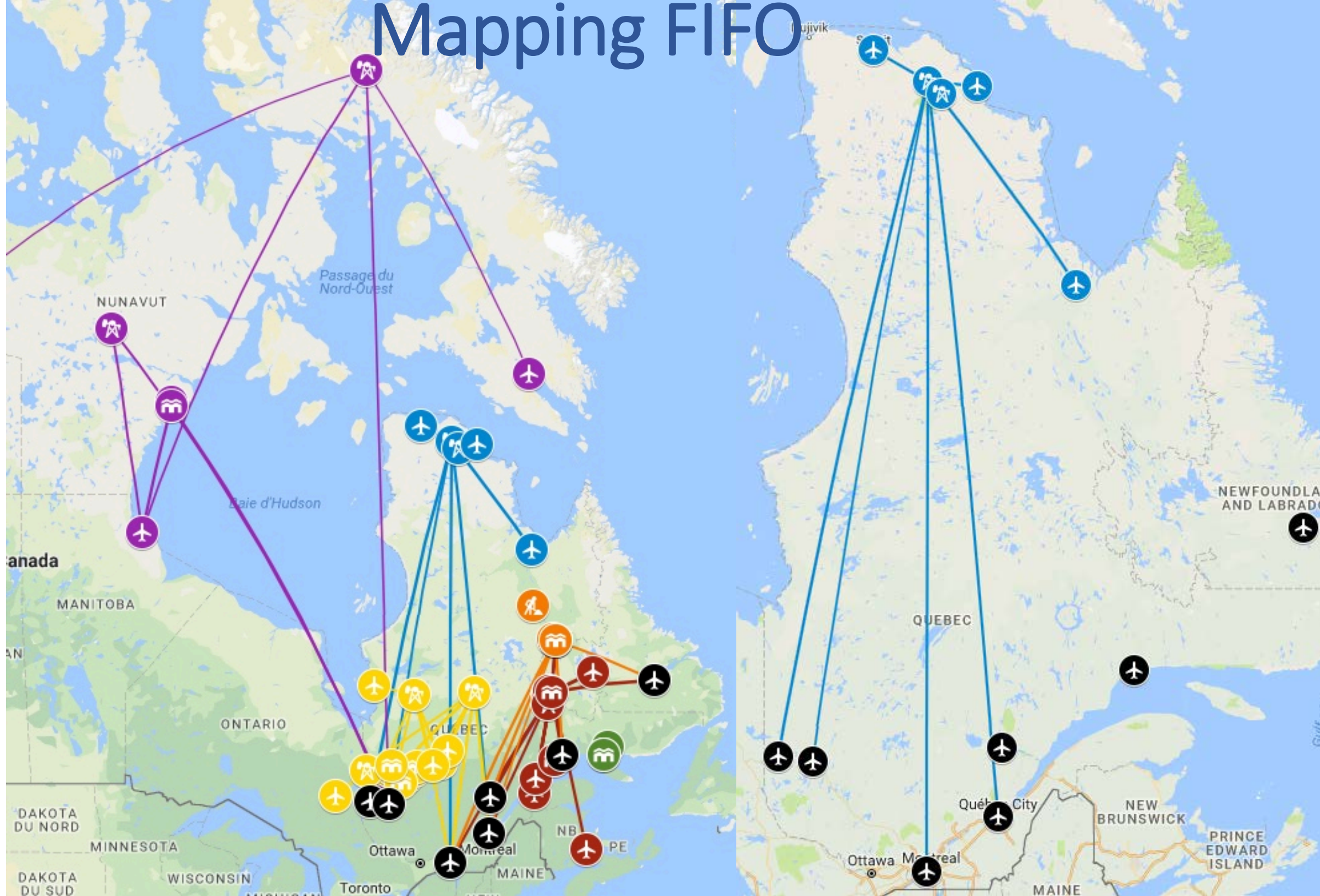


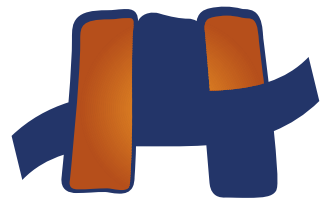
regroupement
DES FEMMES
DE LA CÔTE-NORD

**PLAN
NORD**



Mapping FIFO

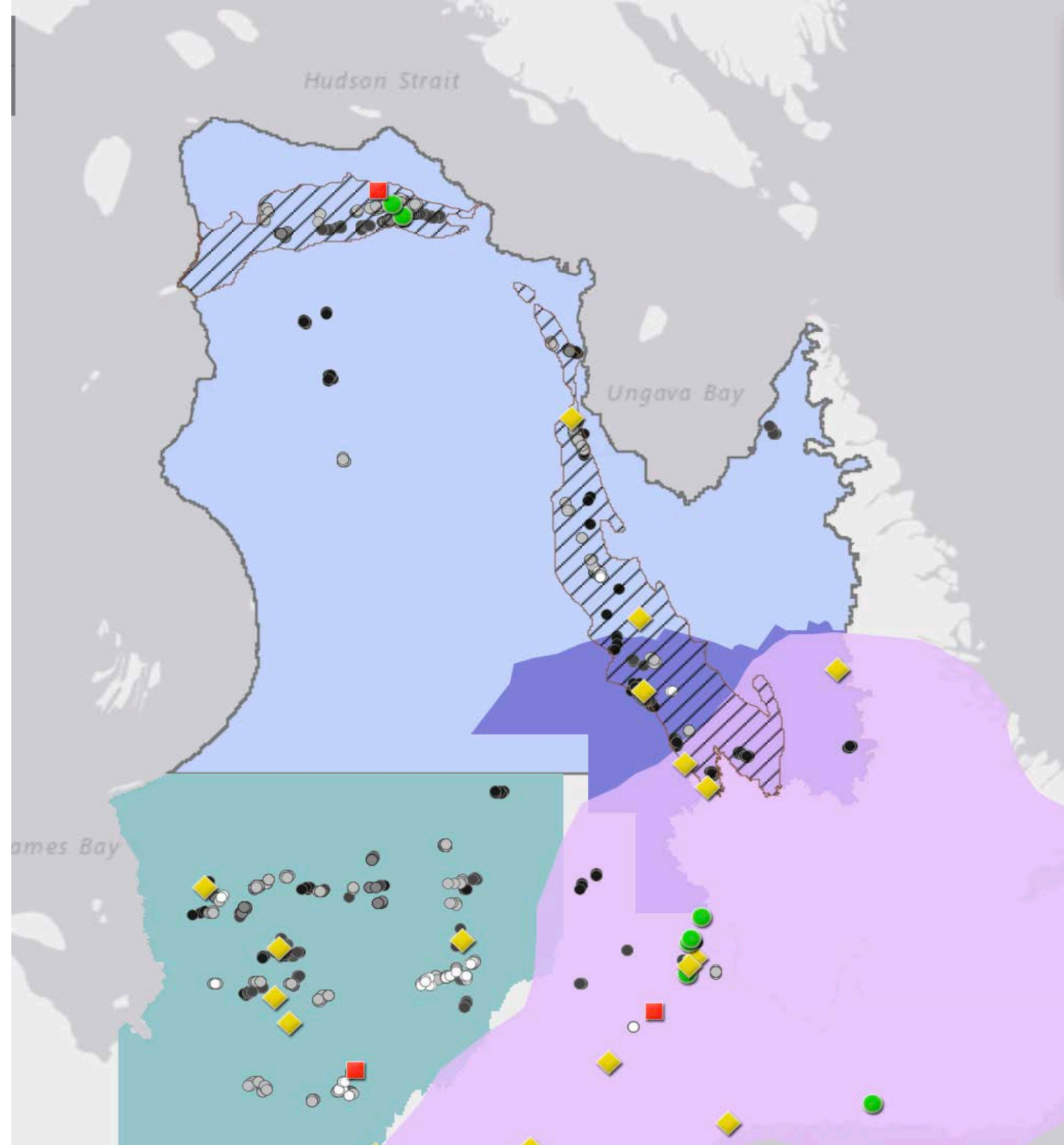




MinErAL

Knowledge Network on Mining Encounters
and Indigenous Sustainable Livelihoods

[Interactive map on the interrelationships between mines, caribou, land management and subsistence economy](#)





Knowledge Network on Mining Encounters
and Indigenous Sustainable Livelihoods

Recent Activities

- May 2019: PhD School with REXSAC: Mining town in transitions, Labrador City (Labrador) and Schefferville and Fermont (QC)



Activities to come

- June 2019: MinErAL annual meeting, Cairns, Australia
- October 2020: International Conference on Mining co-organized by **REXSAC**, Uarctic Extractive Industries Thematic Network, AMÉDÉE, ArcticFrost and **MinErAL**